



DIVE.IS
PADI 5 STAR DIVE CENTER

2 DAY REYKJAVÍK WINTER DIVE TOUR

DIVERS WINTER PARADISE

HIGHLIGHTS

- ✓ Diving in extreme visibility between tectonic plates
- ✓ Geysir geothermal area
- ✓ Gullfoss waterfall
- ✓ Aurora Basecamp Northern Lights Observatory
- ✓ Laugarvatn Fontana Geothermal Spa
- ✓ Suitable for non-divers

INCLUDED

- Scuba tanks and weights
- Transportation
- Professional guide on all dives
- 3 dives in two locations
- Golden Circle sightseeing tour
- Northern lights tour
- Entrance fee to Fontana Spa and Silfra
- For non-divers - a snorkeling tours in Davíðsgjá and Silfra
- Tanks and weights

EXCLUDED

- Food en-route
- Diving equipment other than tanks and weights
- Accommodation

The 2 Day winter dive tour gives divers the opportunity to dive two spectacular freshwater fissures throughout the Icelandic winter. We will dive the world famous Silfra fissure as well as Davíðsgjá, its deeper and darker sister. These two sites are uniquely Icelandic and offer exceptional visibility and unparalleled underwater landscapes. Winter in Iceland offers only short periods of daylight, so this tour is an excellent way to combine some adventurous diving with sensational winter landscapes, sightseeing and the chance to experience the northern lights! Every experience in this package is operated as a private tour.

REQUIREMENTS

- PADI Open Water Diver certification or equivalent
- Dry Suit Experience. Either a Dry suit certification* or a minimum of 10 logged dry suit dives)
- Minimum: 3 divers** / maximum: 12 divers
- Minimum age: 18 years old (17 if accompanied by a guardian)

AVAILABILITY

September through March

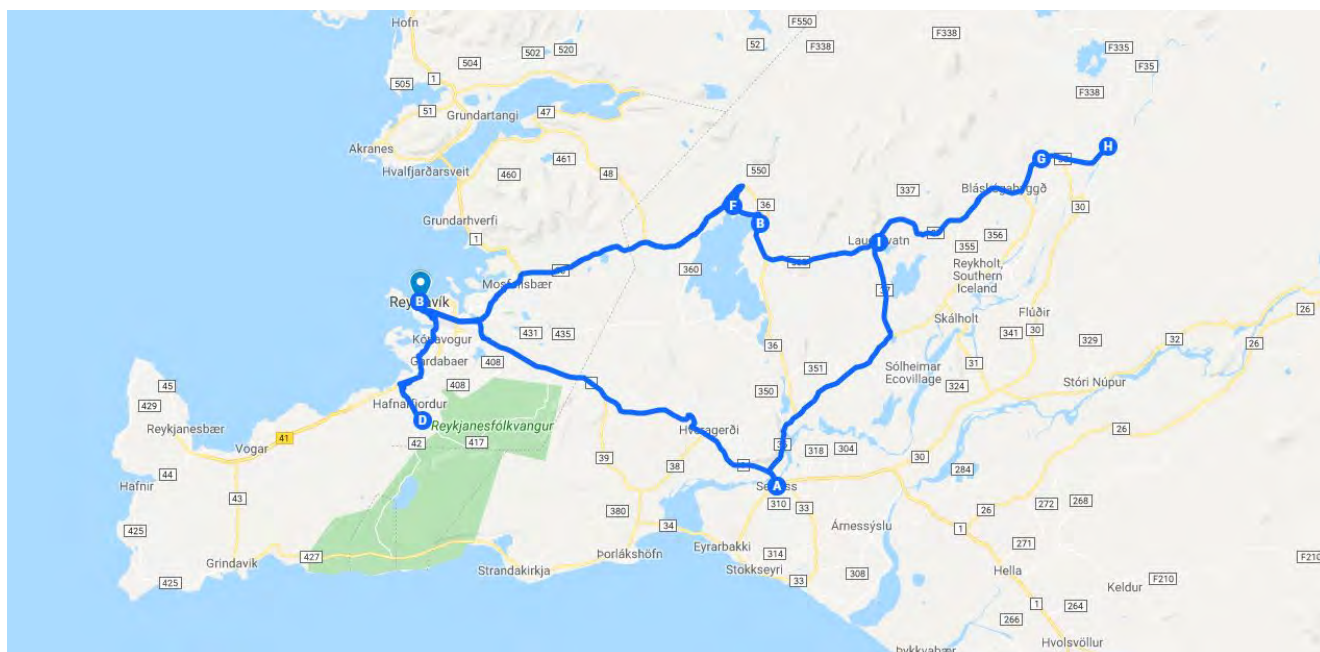
**The PADI Dry suit course is available before the trip.*

***The minimum number of divers has to be reached to confirm a tour.
If the tour is not confirmed you will get a full refund.*



TOUR DESCRIPTION & SCHEDULE

OVERVIEW MAP



Silfra in its winter glory





DAY 1

DIVING IN DAVÍÐSGJÁ & NORTHERN LIGHTS

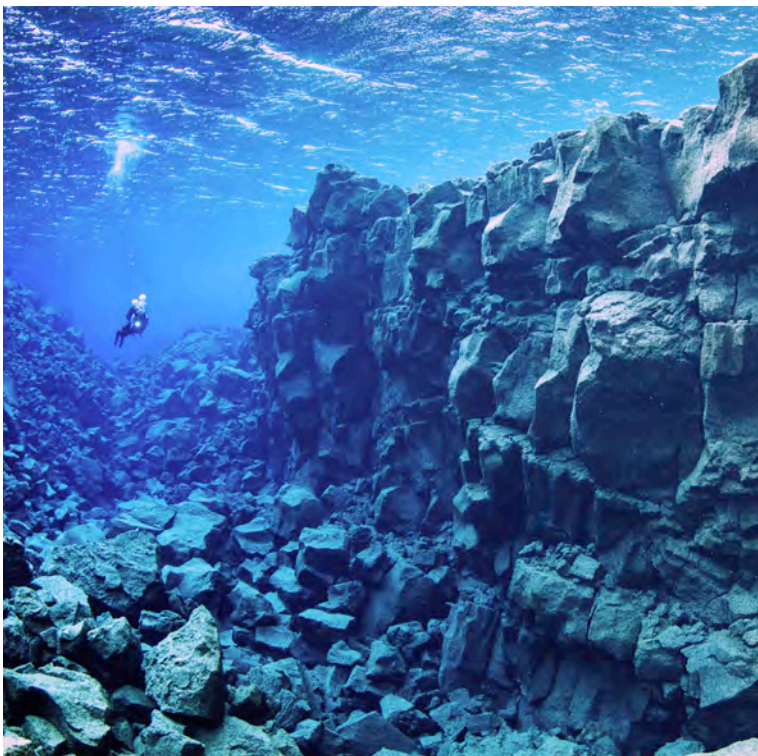
On the first day we will begin by exploring Davíðsgjá, an expansive lava ravine in Þingvellir national park. Davíðsgjá offers the same extraordinary visibility and rare underwater landscape as Silfra, while being deeper and more extended than its little sister.

If conditions allow we will do two dives at this location and explore two sections of the fissure that offer distinct landscapes. After our dives we will drive you back to your hotel in Reykjavik.

Once the fleeting winter sun has set completely, we will regroup and head into the Icelandic wilderness for a visit to the newly built *Northern Lights Observatory* at *Aurora Basecamp*. Here you will learn everything there is to know about the lights, including how to photograph them. You will then be ready to go on your very own Northern Lights hunt!



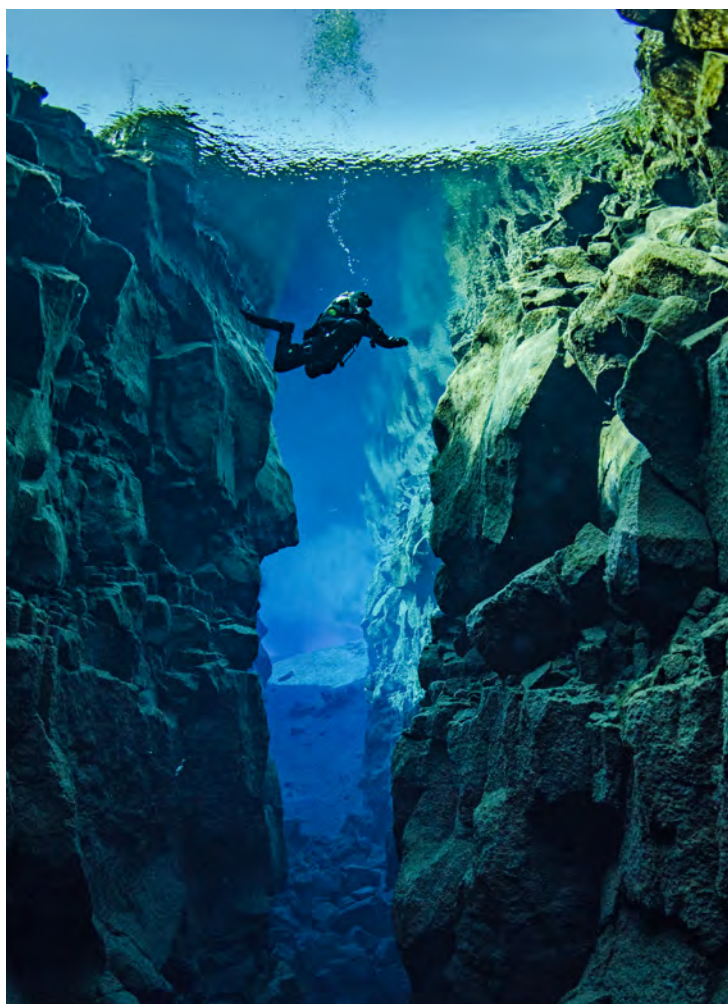
Aurora Basecamp is a unique Northern Lights Observatory





DAY 2

DIVE IN SILFRA & GOLDEN CIRCLE TOUR



Between the continents

On our second day we travel to the most popular dive site in Iceland, Silfra. Once we are geared up we will take a few steps down a purpose-built ladder and make contact with the world's clearest water. It is so pure, we recommend taking a sip. Ranked as one of the greatest cold water dive sites in the world, diving in this tectonic fissure filled with glacial melt water is truly an unforgettable experience not to be missed by any diving enthusiast. After warming up with some hot chocolate we will drive the most popular sightseeing route in Iceland, the *Golden Circle*.



Happy divers walking back from a Silfra dive



The lagoon in Silfra



Our first stop will be at the Geysir geothermal area that boasts two active geysers and many boiling hot pots. Geysir means geyser in Icelandic and Geysir is also the name of the oldest geyser, which at the moment erupts rarely. The most active geyser is called Strokkur and it's the country's most famous hot spring. Strokkur shoots massive jets of boiling water that range between 20 and 40 meters (65 to 130 feet) high, every 5-10 minutes. The sulfurous water paints and sculpts the land in marvelous ways. The Geysir area has long been a popular and impressive site to visit both for Icelanders and foreigners.

Our next stop is only a 5-minute drive away where we take a good look at Gullfoss, the most iconic and most photographed waterfall in Iceland. Gullfoss means *Golden Waterfall* in Icelandic, and if you get to visit Gullfoss on a sunny day you will see that it is aptly named. This numerous waterfalls create a mist that, when caught by the sunlight, covers the whole area in a shimmering golden veil. The canyon walls on both sides of the waterfall reach heights of up to 70 metres (230 feet), descending into the great Gullfossgjúfur canyon.

And that's not all that is impressive about Gullfoss. You can't visit the site without reading the fascinating story of Sigríður Tómasdóttir, the Icelandic heroine that spent her life fighting for Gullfoss and defending it from industrialization. We will end our two day winter adventure with a unique experience where we get to know the healing powers of the geothermal springs. Soak in a natural pool, listen to the bubbling hot spring in the steam rooms, or for the most adventurous, take a dip in the refreshing lake at the Laugarvatn Fontana Geothermal baths.



Gullfoss waterfall



Fontana Spa



Strokkur erupting at Geysir geothermal area



OPTIONAL UPGRADES FOR THE TOUR:

- *PADI Dry Suit Specialty Course* . All divers must be dry suit certified or provide proof of dry suit experience. In order to comply with the tour prerequisites, we can offer you this course before the tour. You can also take the tour with your local dive center before coming to Iceland.
- You can book other activities before or after the tour such as horseback riding, whale watching and lava caving.
- Gear rental is available

IMPORTANT THINGS TO BRING ON THE TOUR:

- Your diving certification cards and, if possible, your diving log book
- Warm outdoor clothing (parka or down jacket, hat and gloves), long underwear, thick warm socks, your private scuba gear, swim-wear and towel. Thermal underwear recommended.
- Proof of dry suit experience: either a dry suit specialty course certification card or minimum 10 logged dry suit dives in the past two years signed by an instructor.
- If you wear glasses, please bring contact lenses or your own prescription mask if you have one.
- Please read the FAQs on our website concerning questions about equipment, clothes and other essentials

OTHER INFORMATION WE NEED FROM YOU:

- Your name, height, weight and age
- Number of logged dives and date of last dive
- Number of logged dry suit dives and date of last dry suit dive
- Mobile phone number (with country code)
- Preferred pick up location in Reykjavik



DIVE.IS
PADI 5 STAR DIVE CENTER

Please contact us for bookings and information
diveexpeditions@dive.is
(+354) 578 6200
www.dive.is

We look forward to diving with you!

PLEASE NOTE:

DIVE.IS stipulates that the tour schedule may be altered due to weather conditions and logistical concerns for your safety and comfort.
This can result in change of dive locations or even in cancellation of certain dives.
DIVE.IS will always endeavor to find suitable alternative dive sites or alternative activities.